

ALL-O-MATIC



Power Door Products
(914) 698-5083
www.PowerDoorProducts.com

allomatic.net

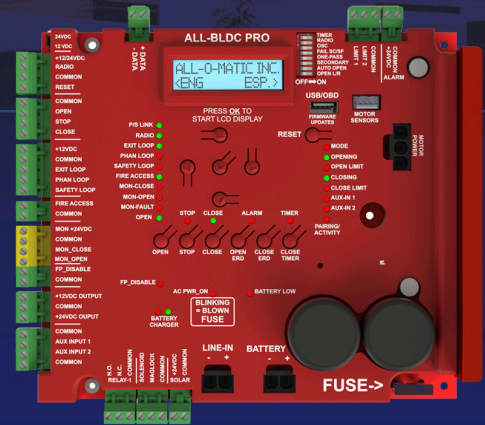
SW-320DC PRO

SWING GATE OPERATOR

ALL-BLDC PRO CONTROL BOARD



Shown with pad mount
option SPD-320



ALL-BLDC PRO FEATURES

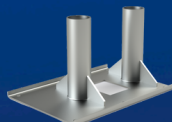
- ✓ LCD DISPLAY WITH ON BOARD DIAGNOSTICS
- ✓ AUTO CLOSE TIMER & OBSTRUCTION SENSING DIGITAL ADJUSTMENTS
- ✓ INTEGRATED WIRELESS PRIMARY/SECONDARY
- ✓ PARTIAL OPEN OPTION
- ✓ PROGRAMMABLE AUXILIARY INPUTS
- ✓ USB PORT TO EXTRACT DIAGNOSTIC DATA AND FIRMWARE UPDATES
- ✓ BUILT-IN VOLT METER THROUGH LCD DISPLAY
- ✓ CYCLE COUNTER AND MUCH MORE



AOM-RED EYE
INCLUDED



SPT-325
Post Mount



SPD-320/325
Pad Mount



RESIDENTIAL



LIGHT COMMERCIAL

SLIDERS | SWINGERS | OVERHEADS

The standard by which all other automatic gate operators are measured.

PRODUCT
INFORMATION



UL 325 2018
COMPLIANT

UL 991
COMPLIANT

CSA C22.2 #247

ALL-O-MATIC



Power Door Products
(914) 698-5083
www.PowerDoorProducts.com

allomatic.net

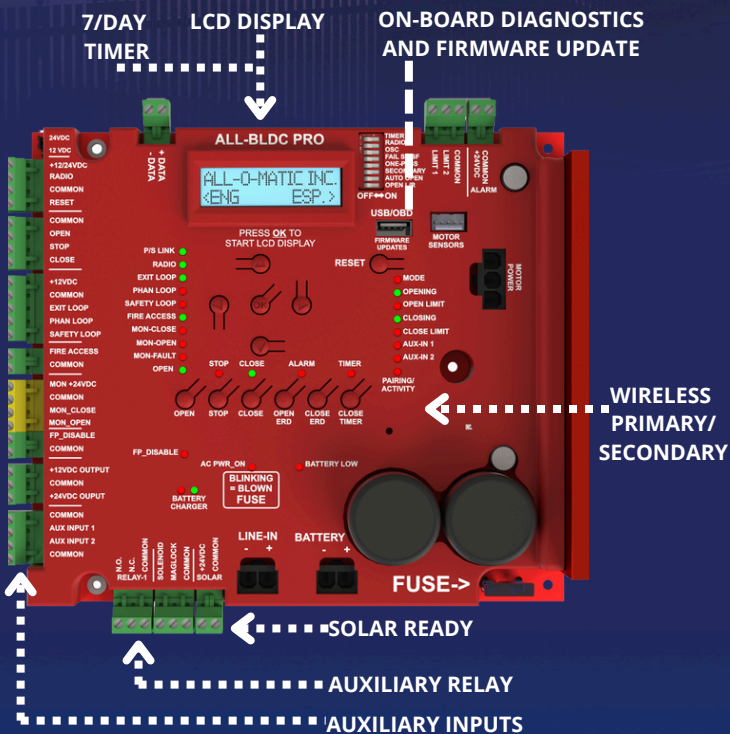


SCAN FOR
PRODUCT
INFORMATION

SW-320DC PRO

SWING GATE OPERATOR

SPECS



- Max Gate Weight** 700 lbs.
- Max Gate Length** 14 feet
- Warranty** 5 year residential - 3 year commercial
- Motor** 24V Brushless DC gearhead motor
- Gate Speed** Adjustable 16-30 seconds per 90° opening
- Power Options** 115/230 VAC single phase and 24 VDC solar panel
- Duty Cycle** 30 Minutes (intermittent)
- Battery Backup** Integrated, with (2) 7Ah 12VDC batteries
- Battery Backup Capacity** Capacity Up to 250 cycles
- Temperature Range** -40 to 160°
- Gearbox Ratio** 25:1
- Width X Length X Height** 14" X 22.5" X 20"
- Shipping Weight** 90 lbs. + 30 lbs. Arm
- Emergency Release** Easy slide quick release arm
- Breaker Requirement** 20 amp dedicated



RESIDENTIAL

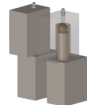


LIGHT COMMERCIAL

AVAILABLE ACCESSORIES



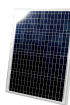
AML-1200B
Mag Lock



GH-1500
Hinges



Fire Boxes



24V Solar Panel



PRIME VD-1
Loop Detector

The Warrantor warrants the SW-320DC PRO Gate Operator. ALL-O-MATIC INC warrants its gate openers for a period of five (3) years in commercial installations, and for a period of seven (5) years in residential installation to be free from defects in circuitry, motor, gear box and workmanship. This warranty applies from the date of purchase to the original owner. Warrantor will repair or, at its option, replace any device which it finds to require service. This device must be sent to the warrantor at the consumer's expense. The warrantor will return the repaired or replaced unit to the customer at the consumer's expense. Labor charges for dealer service or replacement are the responsibility of the owner. These warranties are in lieu of all other warranties either expressed or implied, and ALL-O-MATIC INC shall not be liable for consequential damage. All implied warranties of merchantability and/or fitness for a particular purpose are hereby disclaimed and excluded. This limitation is not valid in jurisdictions which do not allow limitation of incidental or consequential damages or limitation of warranty periods. Caution in order to obtain this policy, please complete the registration card and send it by mail within 30 days of purchasing from ALL-O-MATIC INC. or your INSTALLER. If not registered only a one year warranty on all parts will be provided.

The standard by which all other **automatic gate operators** are measured.

UL 325 2018 COMPLIANT UL 991 COMPLIANT

CSA C22.2 #247